

**NOTES & LEGEND**

True North was deduced from Grant B1 - 84 Subd. Plan

- o Denotes : survey marker found
- o Denotes : survey marker set

SURVEYED BY : Benson Joseph  
 DRAWN BY : Benson Joseph  
 DATE : Dec.06, 2021  
 Job No. : 2021445  
 Plan No. : 2021445-1

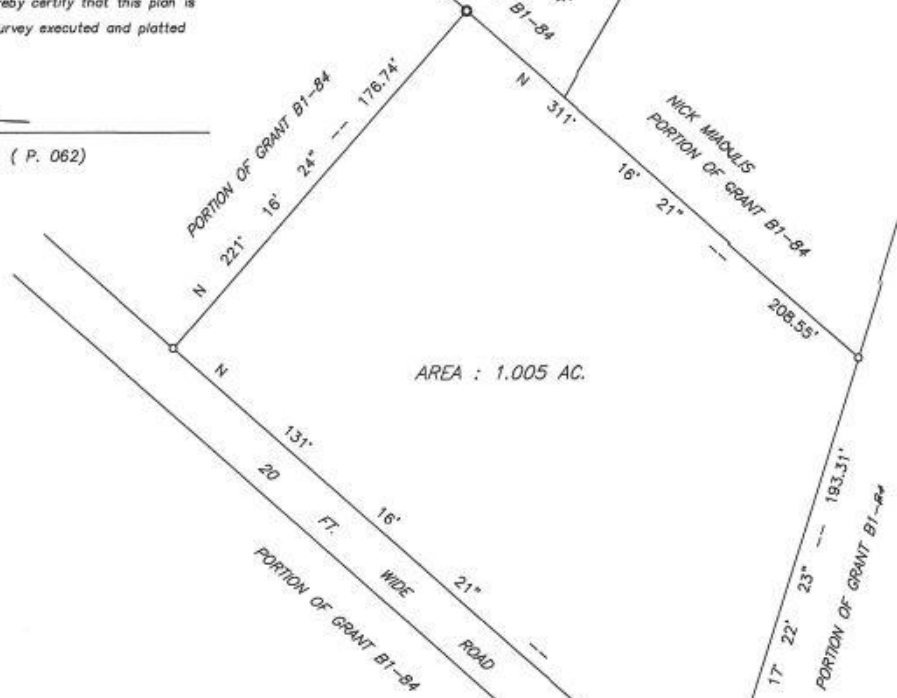
**PLAN**

SHOWING  
 A PARCEL OF LAND  
 BEING PORTION OF GRANT B1-84  
 SITUATE IN THE VICINITY OF

**TURTLE ROCKS**  
 ON  
**GREAT ABACO ISLAND**

IN THE COMMONWEALTH OF THE BAHAMAS  
 SURVEYED AT THE REQUEST OF  
 Gladstone McEwan & Royal Bank(Bahamas)Ltd.

  
 Randy White ( P. 062)



AREA : 1.005 AC.

20 FT. WIDE ROAD

17° 22' 23\"

193.31'

208.55'

178.74'

N 311'

16' 21\"

131'

16' 21\"

17° 22' 23\"

193.31'

208.55'

N 311'

16' 21\"

178.74'

N 221° 16' 24\"

131'

16' 21\"

17° 22' 23\"

193.31'

208.55'

N 311'

16' 21\"

178.74'

N 221° 16' 24\"

131'

16' 21\"

17° 22' 23\"

193.31'

208.55'

N 311'

16' 21\"

178.74'

N 221° 16' 24\"

131'

16' 21\"

17° 22' 23\"

193.31'

208.55'

N 311'

16' 21\"

178.74'

N 221° 16' 24\"

131'

16' 21\"

17° 22' 23\"

193.31'

208.55'

N 311'

16' 21\"

178.74'

N 221° 16' 24\"

131'

16' 21\"

17° 22' 23\"

193.31'

208.55'

N 311'

16' 21\"

178.74'

N 221° 16' 24\"

131'

16' 21\"

17° 22' 23\"

193.31'

208.55'

N 311'

16' 21\"

178.74'

N 221° 16' 24\"

131'

16' 21\"

17° 22' 23\"

193.31'

208.55'

N 311'

16' 21\"

178.74'

N 221° 16' 24\"

131'

16' 21\"

17° 22' 23\"

193.31'

208.55'

N 311'

16' 21\"

178.74'

N 221° 16' 24\"

131'

16' 21\"

17° 22' 23\"

193.31'

208.55'

N 311'

16' 21\"

178.74'

N 221° 16' 24\"

131'

16' 21\"

17° 22' 23\"

193.31'

208.55'

N 311'

16' 21\"

178.74'

N 221° 16' 24\"

131'

16' 21\"

17° 22' 23\"

193.31'

208.55'

N 311'

16' 21\"

178.74'

N 221° 16' 24\"

131'

16' 21\"

17° 22' 23\"

193.31'

208.55'

N 311'

16' 21\"

178.74'

N 221° 16' 24\"

131'

16' 21\"

17° 22' 23\"

193.31'

208.55'

N 311'

16' 21\"

178.74'

N 221° 16' 24\"

131'

16' 21\"

17° 22' 23\"

193.31'

208.55'

N 311'

16' 21\"

178.74'

N 221° 16' 24\"

131'

16' 21\"

17° 22' 23\"

193.31'

208.55'

N 311'

16' 21\"

178.74'

N 221° 16' 24\"

131'

16' 21\"

17° 22' 23\"

193.31'

208.55'

N 311'

16' 21\"

178.74'

N 221° 16' 24\"

131'

16' 21\"

17° 22' 23\"

193.31'

208.55'

N 311'

16' 21\"

178.74'

N 221° 16' 24\"

131'

16' 21\"

17° 22' 23\"

193.31'

208.55'

N 311'

16' 21\"

178.74'

N 221° 16' 24\"

131'

16' 21\"

17° 22' 23\"

193.31'

208.55'

N 311'

16' 21\"

178.74'

N 221° 16' 24\"

131'

16' 21\"

17° 22' 23\"

193.31'

208.55'

N 311'

16' 21\"

178.74'

N 221° 16' 24\"

131'

16' 21\"

17° 22' 23\"

193.31'

208.55'

N 311'

16' 21\"

178.74'

N 221° 16' 24\"

131'

16' 21\"

17° 22' 23\"

193.31'

208.55'

N 311'

16' 21\"

178.74'

N 221° 16' 24\"

131'

16' 21\"

17° 22' 23\"

193.31'

208.55'

N 311'

16' 21\"

178.74'

N 221° 16' 24\"

131'

16' 21\"

17° 22' 23\"

193.31'

208.55'

N 311'

16' 21\"

178.74'

N 221° 16' 24\"

131'

16' 21\"

17° 22' 23\"

193.31'

208.55'

N 311'

16' 21\"

178.74'

N 221° 16' 24\"

131'

16' 21\"

17° 22' 23\"

193.31'

208.55'

N 311'

16' 21\"

178.74'

N 221° 16' 24\"

131'

16' 21\"

17° 22' 23\"

193.31'

208.55'

N 311'

16' 21\"

178.74'

N 221° 16' 24\"

131'

16' 21\"

17° 22' 23\"

193.31'

208.55'

N 311'

16' 21\"

178.74'

N

---

## Building Details

**Foundation:** No

**Exterior material:** Other

**Parking:** Open

**Construction:** None

**Roof:** Other

---

## Amenities & Features

**Sewer:** None

**Air conditioning (Condo):** None

**Amenities:** None

**Style:** Single Family Lot

**Water:** None

---

## Miscellaneous

**Legal Description:** Portion of Grant 81 - 84, 1.005 acres,  
Turtle Rocks, Abaco, The Bahamas

**Site Influences:** Recreation  
Nearby



### Call us now

Phone: (242) 422-3580 (Bahamas) / (954) 591-4999 (USA)

Email: [Pat@bahamasluxuryrealty.net](mailto:Pat@bahamasluxuryrealty.net)

Address: 201 Caves Terrace, Nassau, Bahamas